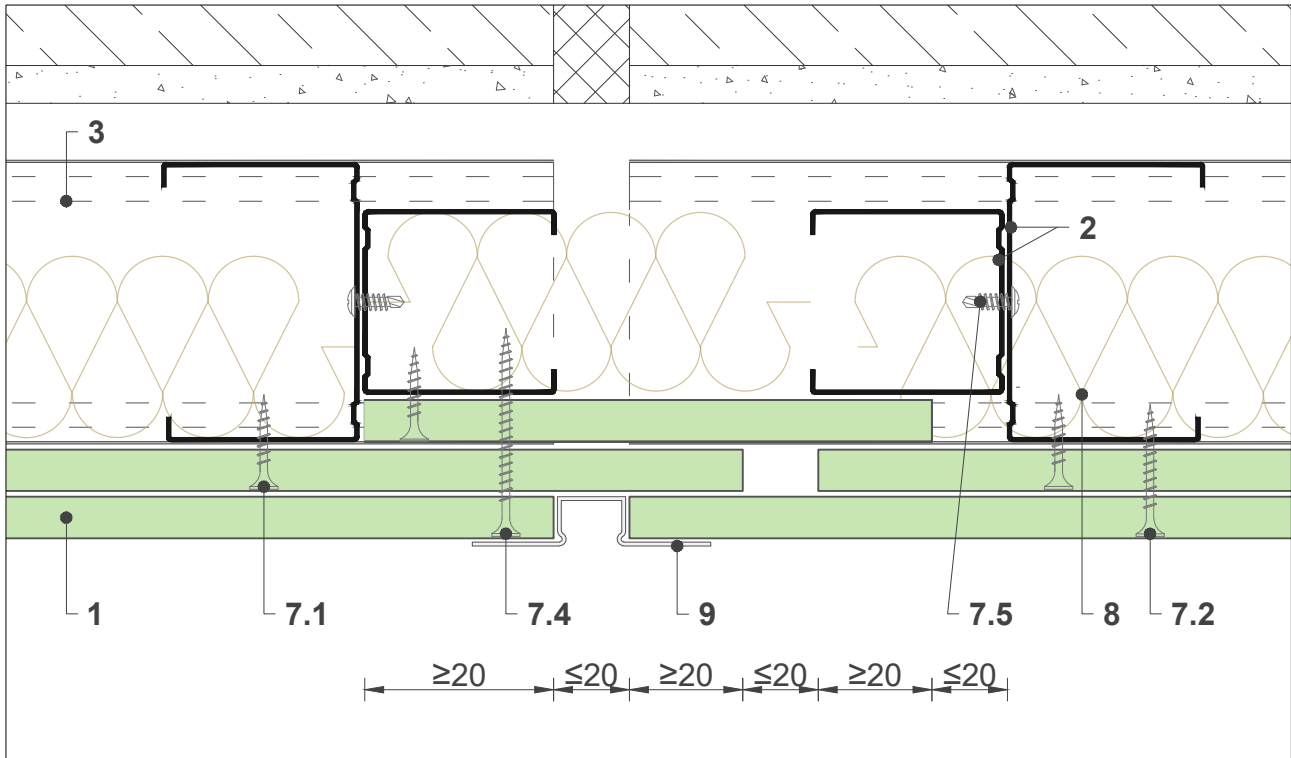


## Technogips Pro S1-2

Expansion gap, horizontal section



scale 1:2

### System components Technogips Pro

- 1 Gypsum plasterboard Type A / H2 / DF / DFH2 / Sound Comfrot Extra DF
- 2 Premium Profile CW 50, 75, 100 / 0.6 mm
- 3 Premium Profile UW 50, 75, 100 / 0.6 mm
- 4 Acoustic foam tape
- 5 Joint tape
- 6 FUGA gypsum joint-filler
- 7.1 Drywall screw 3.5 x 25 mm
- 7.2 Drywall screw 3.5 x 35 mm
- 7.4 Drywall screw 3.5 x 55 mm
- 7.5 Self-drilling screw TEX 4.2 x 13 mm
- 8 Mineral wool
- 9 Angle bead