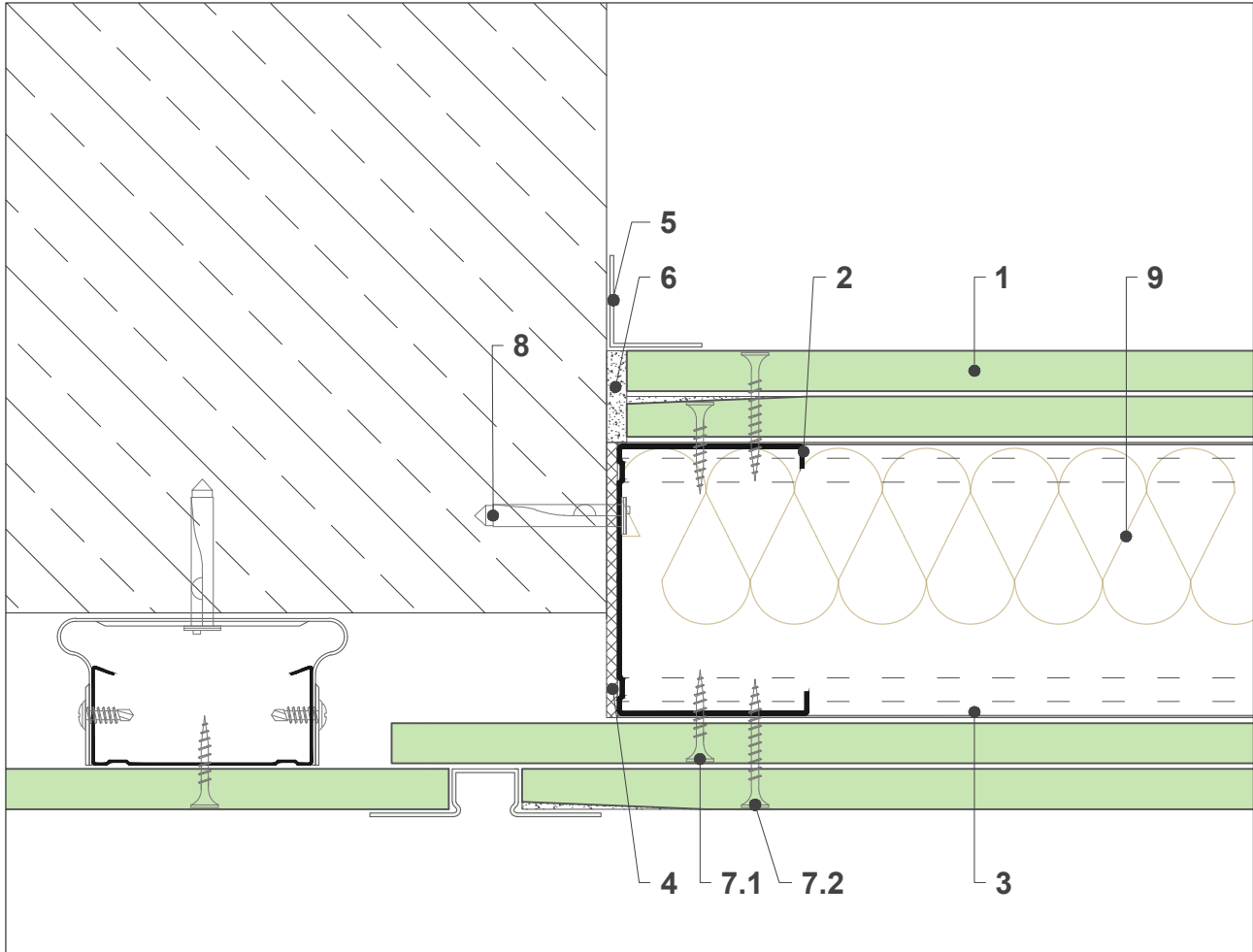


PARTITION WALLS

Technogips Pro W 1-2

Connection W 1-2 with L 1-1, horizontal section



scale 1:2

System components Technogips Pro

- 1 Gypsum plasterboard Type A / H2 / DF / DFH2 / Sound Comfort Extra DF
- 2 Premium Profile CW 50, 75, 100 / 0.6 mm
- 3 Premium Profile UW 50, 75, 100 / 0.6 mm
- 4 Acoustic foam tape
- 5 Joint tape
- 6 FUGA gypsum joint-filler
- 7.1 Drywall screw 3.5 x 25 mm
- 7.2 Drywall screw 3.5 x 35 mm
- 8 Nail plug 6 x 40, 60, 80 mm / Ceiling anchor 6 x 40, 60 mm
- 9 Mineral wool