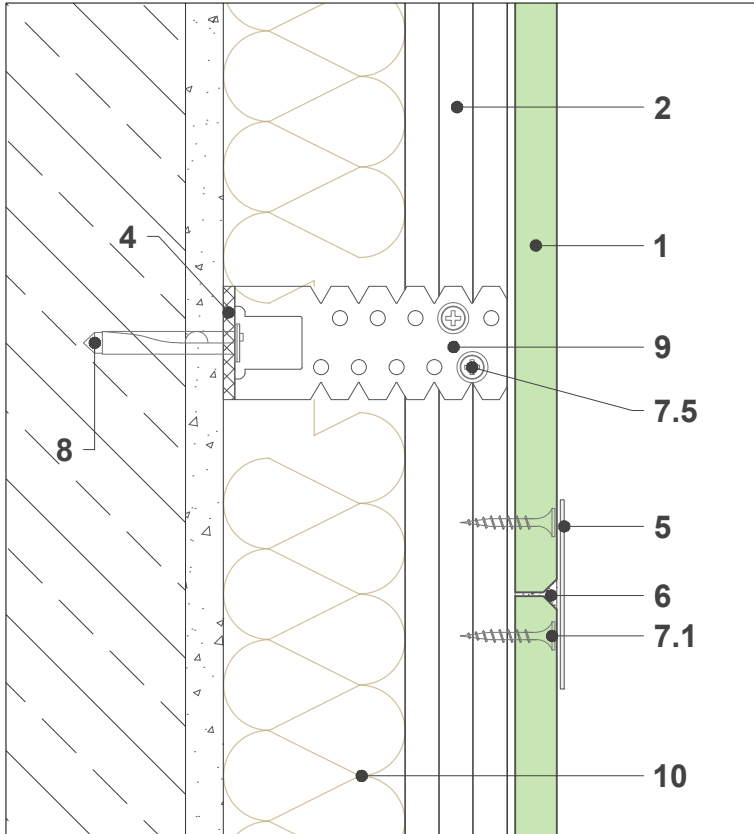


WALL LININGS

Technogips Pro L1-1

Joint, vertical section



scale 1:2

System components Technogips Pro

- 1 Gypsum plasterboard Type A / H2 / DF / DFH2 / Sound Comfrot Extra DF
- 2 Premium Profile CD 60 / 0.6 mm
- 3 Premium Profile UD 27 / 0.6 mm
- 4 Acoustic foam tape
- 5 Joint tape
- 6 FUGA gypsum joint-filler
- 7.1 Drywall screw 3.5 x 25 mm
- 7.5 Self-drilling screw TEX 4.2 x 13 mm
- 8 Nail plug 6 x 40, 60, 80 mm / Ceiling anchor 6 x 40, 60 mm
- 9 Adjusting bracket
- 10 Mineral wool
- 11 Angle bead