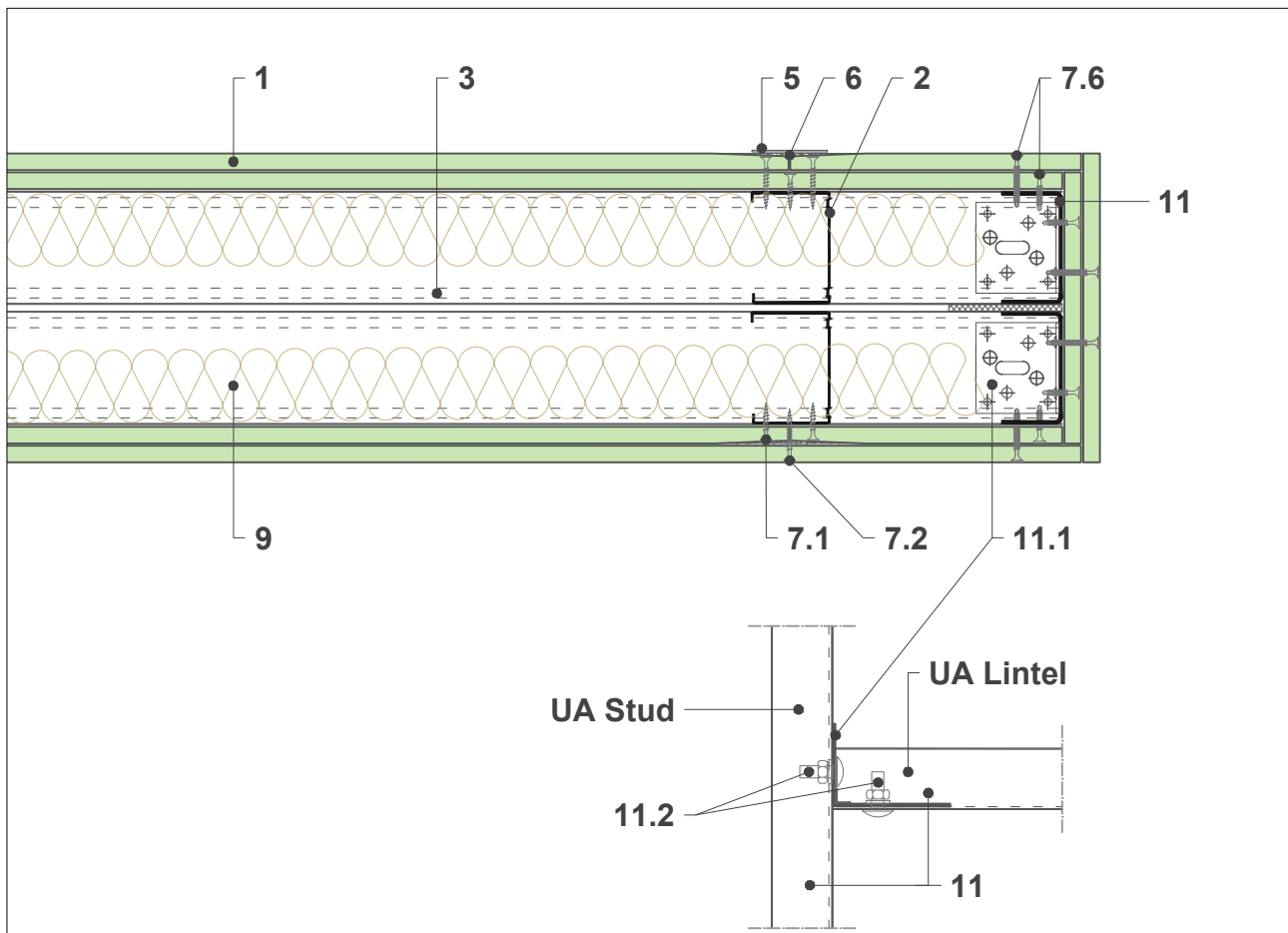


## Technogips Pro W 2-2A

Opening forming with UA profile, horizontal section



scale 1:5

### System components Technogips Pro

- 1 Gypsum plasterboard Type A / H2 / DF / DFH2 / Sound Comfort Extra DF
- 2 Premium Profile CW 50, 75, 100 / 0.6 mm
- 3 Premium Profile UW 50, 75, 100 / 0.6 mm
- 4 Acoustic foam tape
- 5 Joint tape
- 6 FUGA gypsum joint-filler
- 7.1 Drywall screw 3.5 x 25 mm
- 7.2 Drywall screw 3.5 x 35 mm
- 7.6 Self-drilling screw 3.5 x 25, 35 mm
- 9 Mineral wool
- 11 Premium Profile UA 50, 75, 100 / 2 mm
- 11.1 Angle for UA profile
- 11.2 Frame fitting screw for UA profile