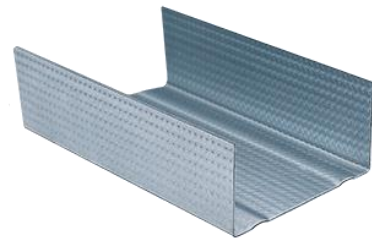


## Premium Profile UW 50 | 75 | 100

Technogips Pro Premium Profile UW 50 | 75 | 100 (horizontally positioned) ideal for the construction of light partition walls, wall linings and facades through dry construction methods.

The specially designed 3D structure of the steel increases its material strength capacity and ensures uniformity and stability when perforating and fastening with drywall screws.

The distinctively grey colour zinc coating guarantees the profile to be vastly corrosion resistant.



### Standard Classification:

In compliance with EN 14195:2015 & DIN 18182-1:2015,  
Type: **U 40/50/40** | **U 40/75/40** | **U 40/100/40**

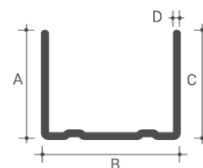


### Advantages:

- ✓ The 3D structure of the metal results in an increase of yield strength and the ease and durability in the application of Drywall Screws.
- ✓ A vital component in each of the Technogips Pro high-performance systems for fire protection and sound insulation.
- ✓ Fast and easy installation.
- ✓ Lightweight with high strength.
- ✓ Guaranteed uniformity of the zinc coating.

### Technical data:

Technical Characteristics	
Steel Thickness	0.5   0.6 mm
Reaction to Fire	A1
Scope of Zinc Coating	Z100(0.5)   Z140(0.6)
Yield Strength R <sub>r</sub> , N/mm <sup>2</sup>	140



Product	Dimensions A/B/C	Thickness	Length
Premium Profile UW 50	40/50/40 mm	0.5   0.6 mm	3.0   4.0 m
Premium Profile UW 75	40/75/40 mm	0.5   0.6 mm	3.0   4.0 m
Premium Profile UW 100	40/100/40 mm	0.5   0.6 mm	3.0   4.0 m

### Packaging and Storage:

Product	Thickness	Length	Profiles / Pack	Profiles / Pallet
Premium Profile UW 50	0.5   0.6 mm	3.0   4.0 m	8 pcs	192 pcs
Premium Profile UW 75	0.5   0.6 mm	3.0   4.0 m	8 pcs	128 pcs
Premium Profile UW 100	0.5   0.6 mm	3.0   4.0 m	8 pcs	96 pcs

Humidity and other atmospheric conditions can lead to the formation of white oxidised patches on the profile's surfaces. It's advisable to strictly follow the storage instructions prescribed on how to store the product safely:

- ✓ Store in a dry, covered and ventilated area.
- ✓ In the case of extended exposure to the natural elements (not recommended), the bundles will require to be positioned at a small angle for the collected water to drain.

### Safety Recommendations:

- ✓ Product not classified as hazardous.
- ✓ The use of safety gloves is strongly advisable when working with this product, in prevention from physical harm.