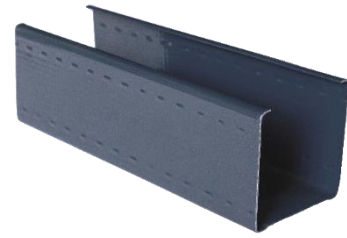


CW Profile Super Premium C4

Vertical CW Profile Super Premium, class C4 with high level of protection against corrosion for the construction of partition walls and shaft walls.



Standard Classification:

In compliance with EN 14195:2015 & DIN 18182-1:2015,
Type: **C 51/48.8/48** | **C 51/73.8/48** | **C 51/98.8/48**



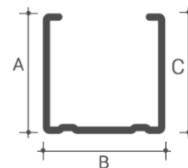
Corrosivity Category, acc. EN ISO 12944-2: **Class C4 High Level of Protection**

Aggressive Environment Examples for class C4:

- **External / Exterior**
 - Urban and industrial atmospheric conditions with moderate levels of air pollutants.
 - Industrial zones.
 - Coastal areas with moderate levels of salt in the air.
- **Internal / Interior**
 - Production areas with high levels of moisture and moderate levels of air pollutants e.g. milk processing areas, breweries, laundries, food production facilities.
 - Spaces where condensation is frequent, with high levels of air pollutants caused by manufacturing processes, e.g. industrial facilities, places with swimming pools, public changing rooms and shower rooms.

Technical data:

Technical Characteristics	
Steel Thickness	0.6 mm
Reaction to Fire	A1
Scope of Zinc Coating	min Z275
Yield Strength R _r , N/mm ²	140



Product	Dimensions A/B/C	Thickness	Length
CW 50 Profile Super Premium C4	51/48.8/48 mm	0.6 mm	3.0 4.0 m
CW 75 Profile Super Premium C4	51/73.8/48 mm	0.6 mm	3.0 4.0 m
CW 100 Profile Super Premium C4	51/98.8/48 mm	0.6 mm	3.0 4.0 m

Packaging and Storage:

Product	Thickness	Length	Profiles / Pack	Profiles / Pallet
CW 50 Profile Super Premium C4	0.6 mm	3.0 4.0 m	8 pcs	192 pcs
CW 75 Profile Super Premium C4	0.6 mm	3.0 4.0 m	8 pcs	128 pcs
CW 100 Profile Super Premium C4	0.6 mm	3.0 4.0 m	8 pcs	96 pcs

It's advisable to strictly follow the storage instructions prescribed on how to store the product safely:

- ✓ Store in a dry, covered and ventilated area.
- ✓ In the case of extended exposure to the natural elements (not recommended), the bundles will require to be positioned at a small angle for the collected water to drain.

Safety Recommendations:

- ✓ Product not classified as hazardous.
- ✓ The use of safety gloves is strongly advisable when working with this product, in prevention from physical harm.